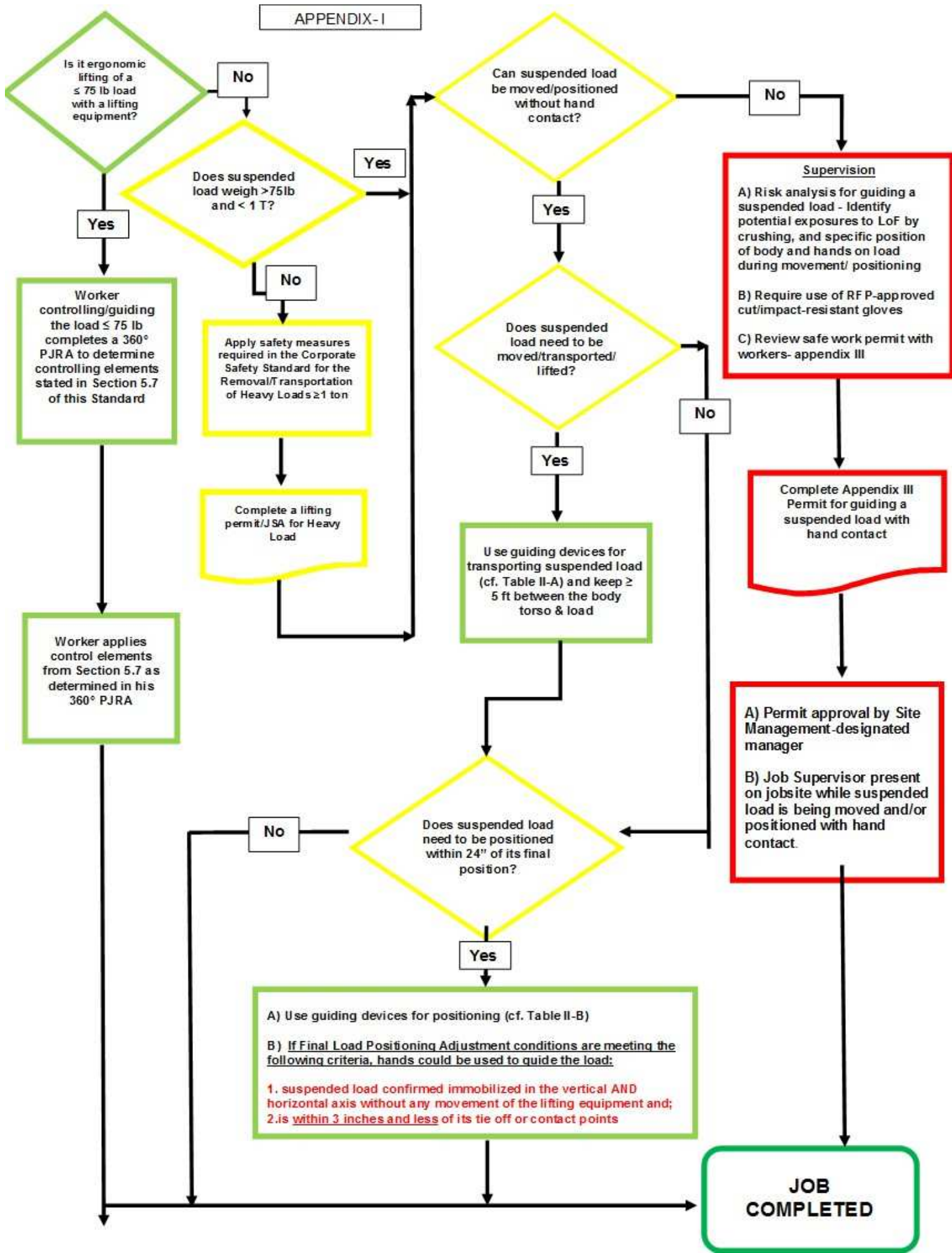


APPENDIX-I



Is it ergonomic lifting of a ≤ 75 lb load with a lifting equipment?

No

Does suspended load weigh >75lb and < 1 T?

Yes

No

Apply safety measures required in the Corporate Safety Standard for the Removal/Transportation of Heavy Loads ≥1 ton.

Complete a lifting permit/JSA for Heavy Load

Can suspended load be moved/positioned without hand contact?

No

Yes

Does suspended load need to be moved/transported/lifted?

No

Yes

Use guiding devices for transporting suspended load (cf. Table II-A) and keep ≥ 5 ft between the body torso & load

Does suspended load need to be positioned within 24" of its final position?

No

Yes

A) Use guiding devices for positioning (cf. Table II-B)
B) If Final Load Positioning Adjustment conditions are meeting the following criteria, hands could be used to guide the load:
1. suspended load confirmed immobilized in the vertical AND horizontal axis without any movement of the lifting equipment and;
2. is within 3 inches and less of its tie off or contact points

Supervision
A) Risk analysis for guiding a suspended load - Identify potential exposures to LoF by crushing, and specific position of body and hands on load during movement/ positioning
B) Require use of RFP-approved cut/impact-resistant gloves
C) Review safe work permit with workers- appendix III

Complete Appendix III Permit for guiding a suspended load with hand contact

A) Permit approval by Site Management-designated manager
B) Job Supervisor present on jobsite while suspended load is being moved and/or positioned with hand contact.

JOB COMPLETED

Worker applies control elements from Section 5.7 as determined in his 360° PJRA

Worker controlling/guiding the load ≤ 75 lb completes a 360° PJRA to determine controlling elements stated in Section 5.7 of this Standard